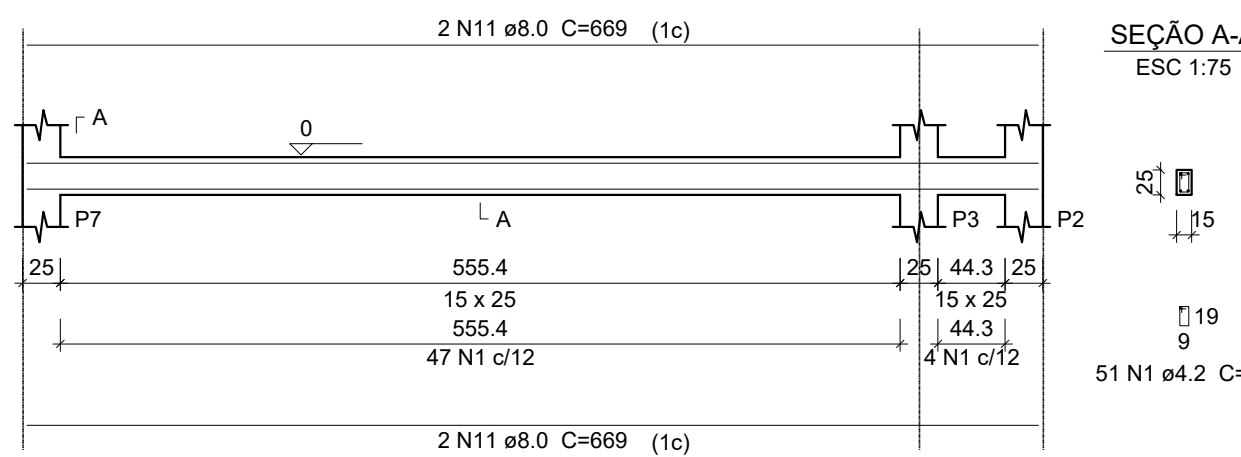


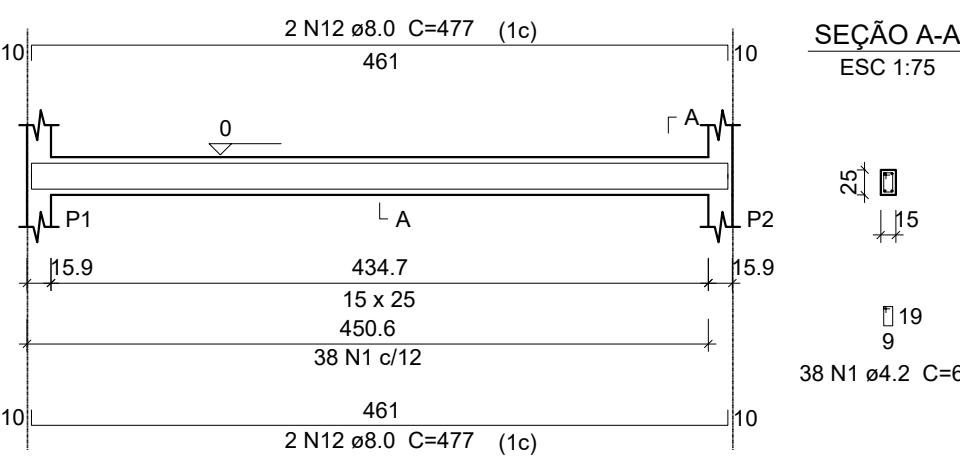
## V10

ESC 1:50



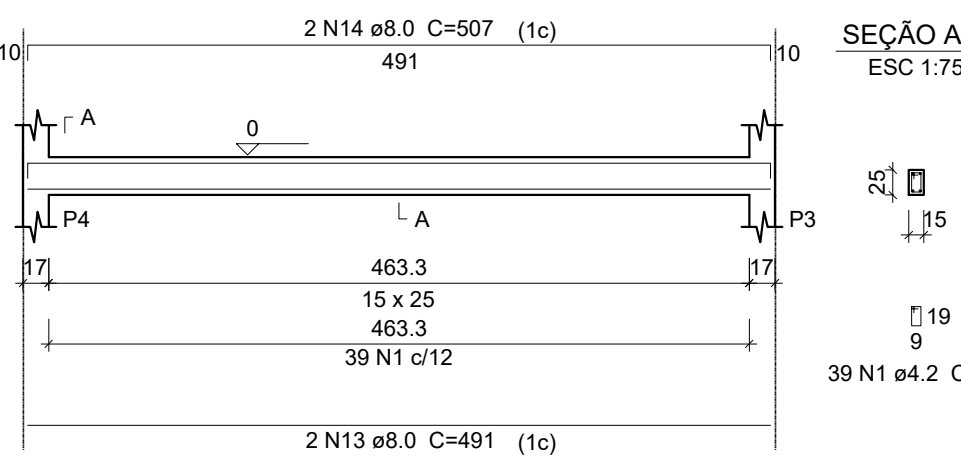
## V11

ESC 1:50



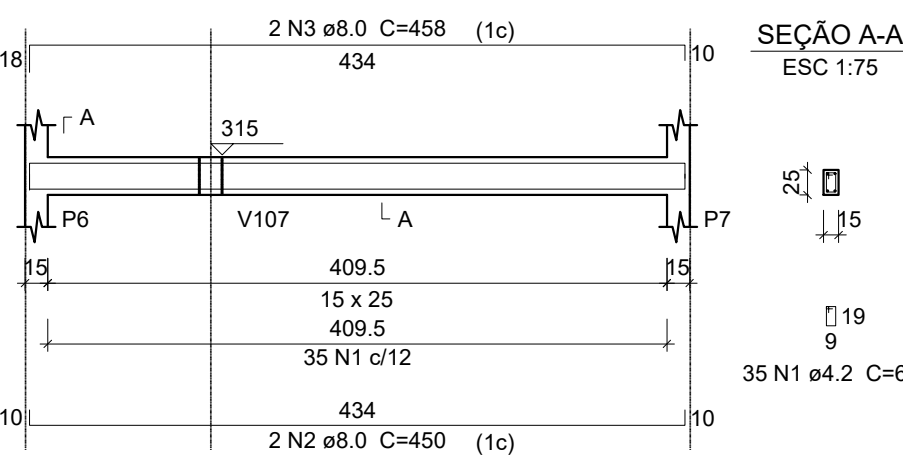
## V12

ESC 1:50



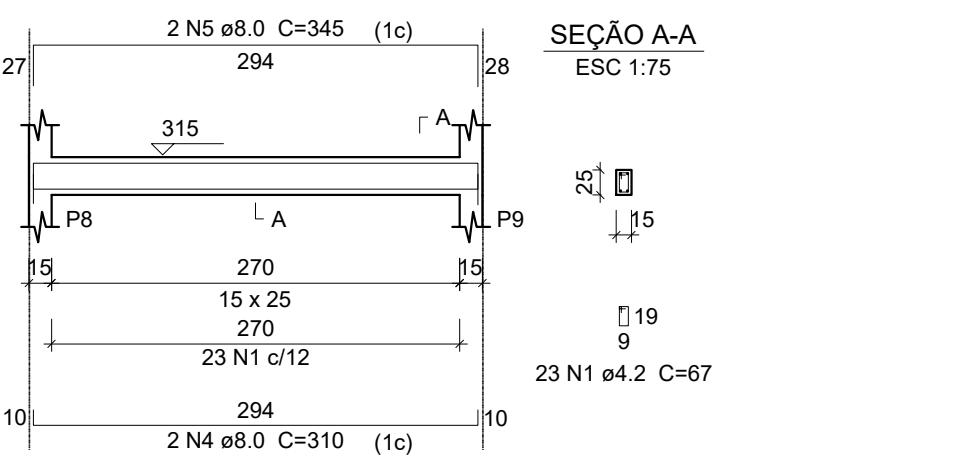
## V101

ESC 1:50



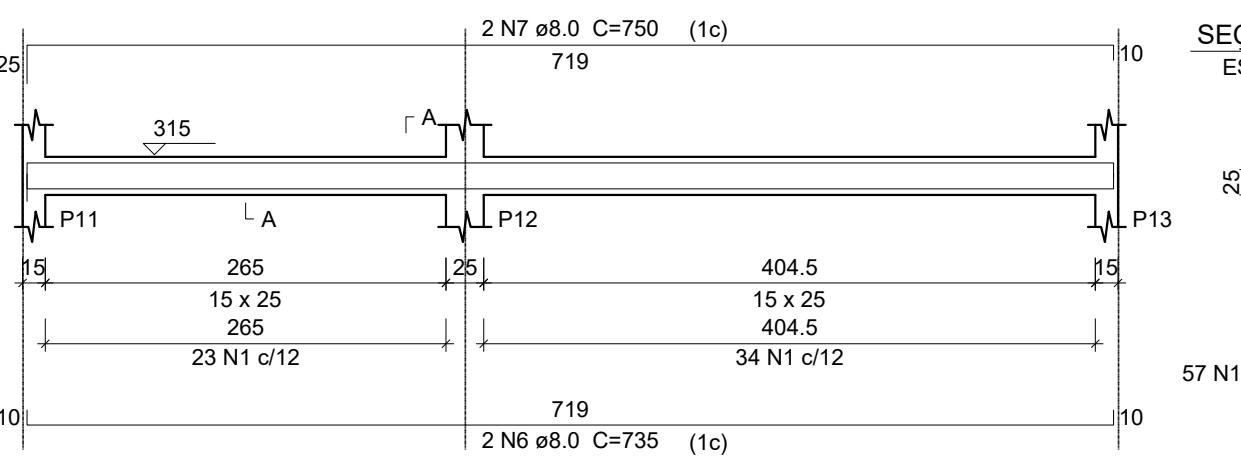
## V102

ESC 1:50



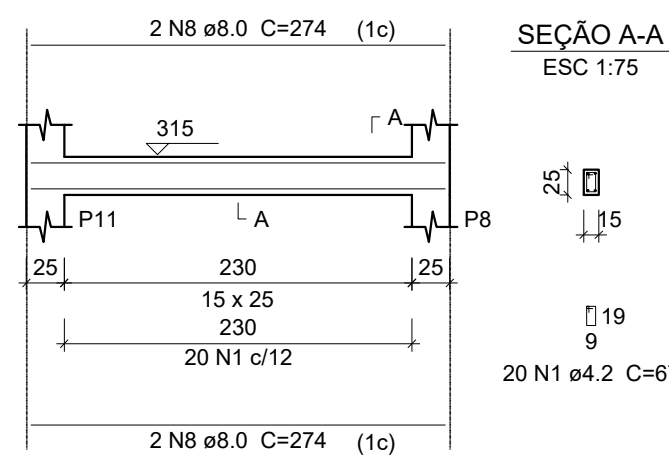
## V103

ESC 1:50



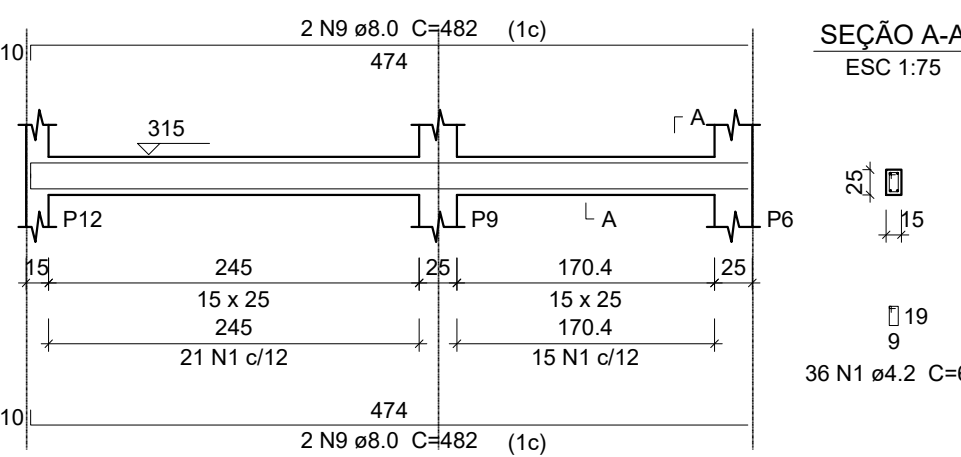
## V104

ESC 1:50



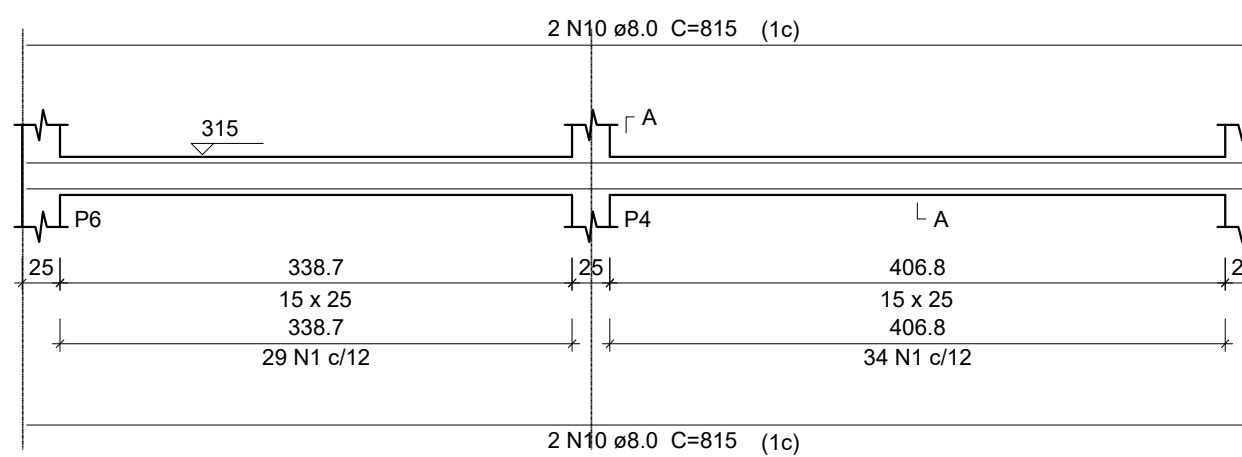
## V105

ESC 1:50



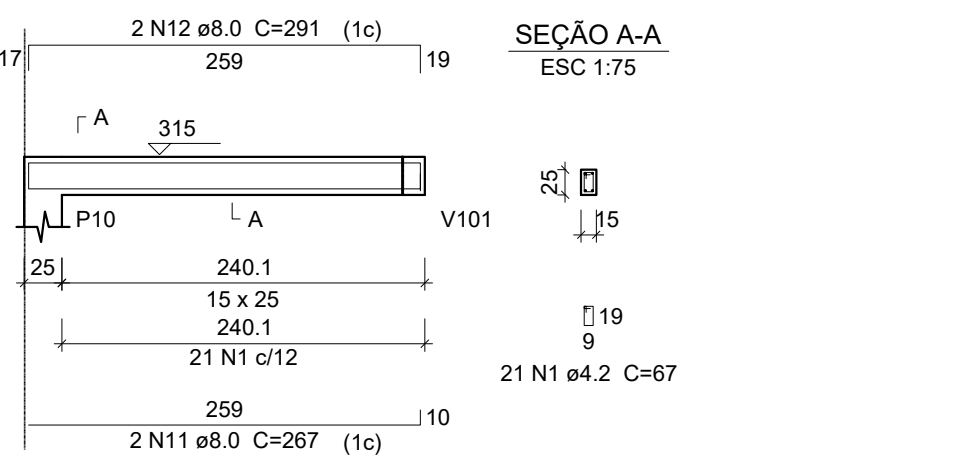
## V106

ESC 1:50



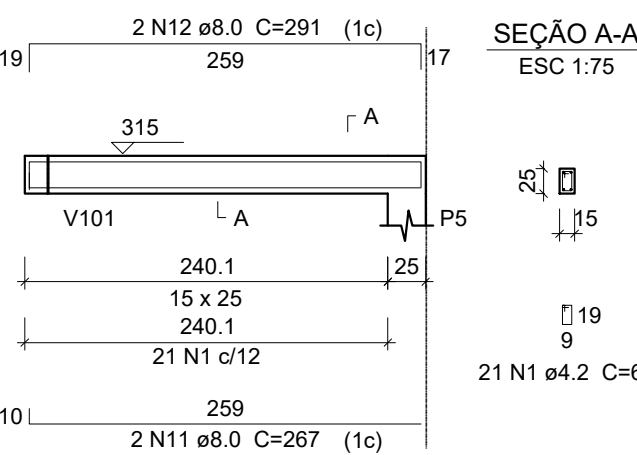
## V107

ESC 1:50



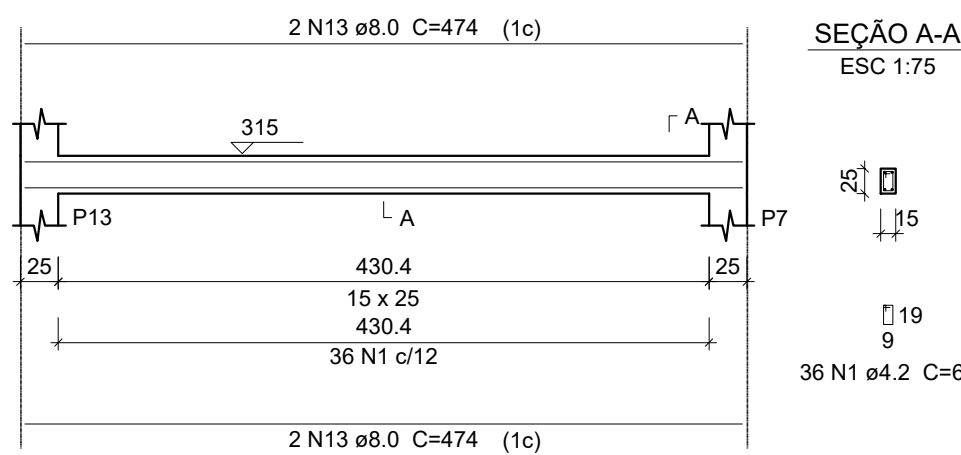
## V108

ESC 1:50



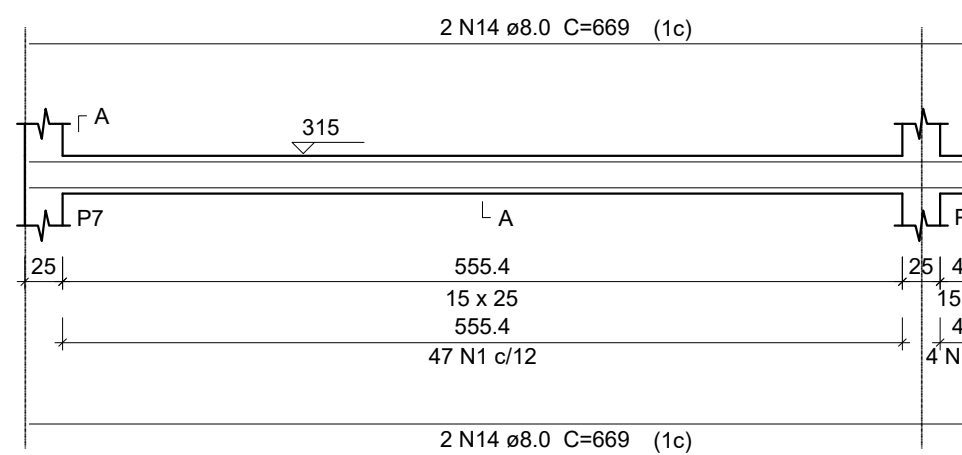
## V109

ESC 1:50



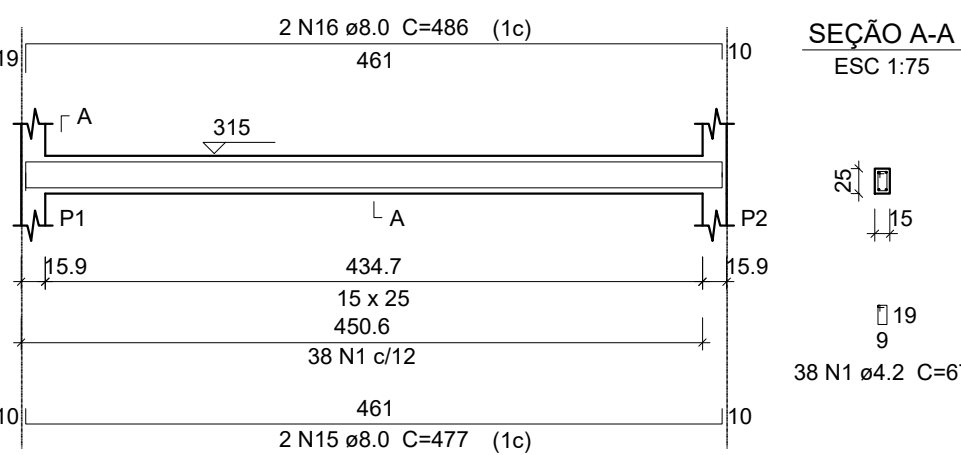
## V110

ESC 1:50



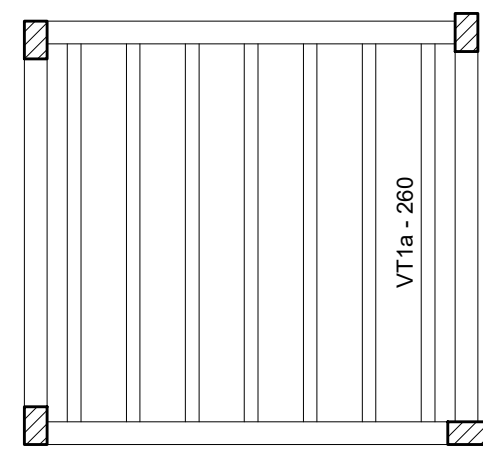
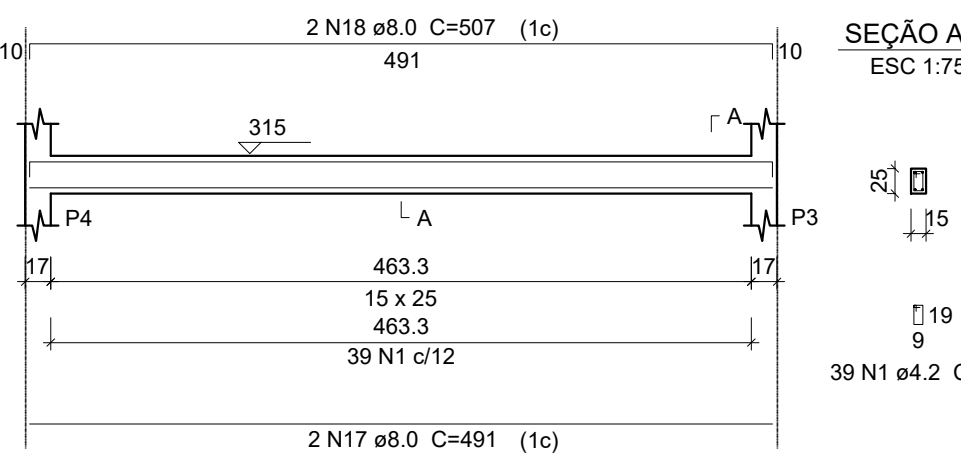
## V111

ESC 1:50

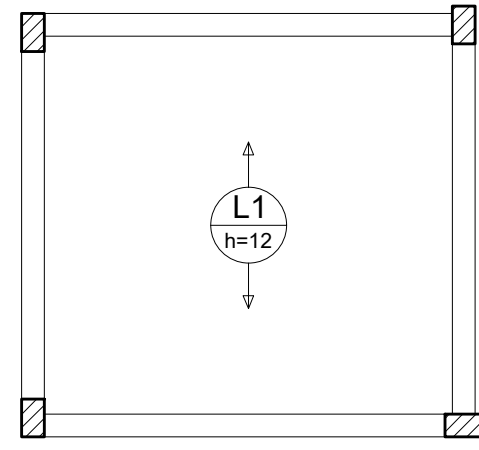


## V112

ESC 1:50



Planta de vigotas pré-moldadas  
escala 1:50



Armação positiva das lajes do pavimento SUPERIOR (Eixo Y)  
escala 1:50

### Relação do aço

AÇO	N	DIAM	Q	UNIT (cm)	C.TOTAL (cm)
V101	1	4.2	440	67	29480
V104	2	8.0	2	450	900
V107	3	8.0	2	458	916
V110	4	8.0	2	310	620
	5	8.0	2	345	690
	6	8.0	2	735	1470
	7	8.0	2	750	1500
	8	8.0	4	274	1096
	9	8.0	4	482	1928
	10	8.0	4	815	3260
	11	8.0	4	267	1068
	12	8.0	4	291	1164
	13	8.0	4	474	1896
	14	8.0	4	669	2676
	15	8.0	2	477	954
	16	8.0	2	486	972
	17	8.0	2	491	982
	18	8.0	2	507	1014

### Resumo do aço

AÇO	DIAM	C.TOTAL (m)	PESO + 10 % (kg)
CA50	8.0	231.1	100.3
CA60	4.2	294.8	35.3
PESO TOTAL			
CA50	100.3		
CA60	35.3		

Vol. de concreto total (C-25) = 2.14 m³  
Área de forma total = 37.01 m²

### Relação do aço

AÇO	N	DIAM	Q	UNIT (cm)	C.TOTAL (cm)
CA60	1	4.2	455	67	30485
CA50	2	8.0	52	345	17940

### Resumo do aço

AÇO	DIAM	C.TOTAL (m)	PESO + 10 % (kg)
CA50	8.0	179.4	77.9
CA60	4.2	304.9	36.5
PESO TOTAL			
CA50	77.9		
CA60	36.5		

Vol. de concreto total (C-25) = 1.54 m³  
Área de forma total = 32.76 m²

### Relação do aço

AÇO	N	DIAM	Q	UNIT (cm)	C.TOTAL (cm)
CA60	1	4.2	165	67	11055
CA50	2	8.0	44	132	5808

### Resumo do aço

AÇO	DIAM	C.TOTAL (m)	PESO + 10 % (kg)
CA50	8.0	58.1	25.2
CA60	4.2	110.6	13.2
PESO TOTAL			
CA50	25.2		
CA60	13.2		

Vol. de concreto total (C-25) = 0.56 m³  
Área de forma total = 11.88 m²

RECEBIDO EM:

\_\_/\_\_/\_\_



ESTADO DO TOCANTINS  
PREFEITURA MUNICIPAL DE DIANÓPOLIS  
ADMINISTRAÇÃO 2017/2020

Proprietário: Prefeitura Municipal de Dianópolis

Endereço: Rua Professor Gabriel Araújo - Nova Cidade

Autor do Projeto: Eng. Civil George Dias

Responsável Técnico: George Luiz Martins Dias Filho

PROPRIETÁRIO CNPJ: 01.138.957/0001-61

RESPONSÁVEL TÉCNICO CREA: 310010/D-TO

PROJETO ESTRUTURAL - Detalhes.

Projeto: Estrutural Versão: 01 Data: 26/out/2020

Número: 3/3 Escala: Indicada Contatos: (63) 9 9224-0306

Quadro de Áreas:  
Área construída mercado: 367,62 m² Área construída anexos: 60,86 m²